

dedicated to my son Ernestinho

Travesso

(Naughty)

Tango



E♭ version

Form: AA BB A CC A

♩ = c. 87

Ernesto Nazareth

1913

A

B_m

B_m/A

C⁷/G[♯]

G⁷



F⁷

F⁷/E

B_m/D

F⁷/C[♯]

B_m

D⁶

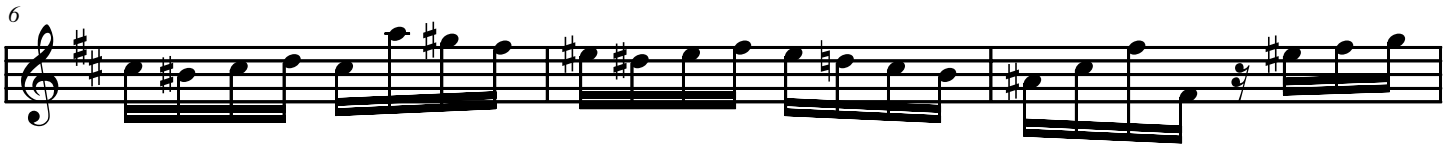


F⁷/C[♯]

G⁷/C

C[♯]/B

F⁷/A[♯]



B_m

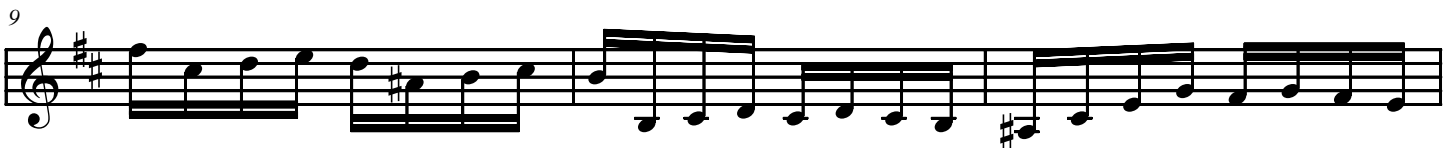
B_m/A

C⁷/G[♯]

G⁷

F⁷

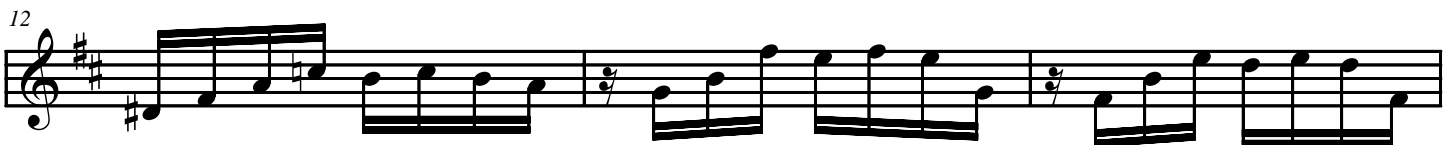
F⁷/E



D[♯]dim

E_mdim

B_m/F[♯]



C⁷/G[♯]

F⁷/A[♯]

B_m

B_m

B_m



Fine

A⁷/E

A⁷

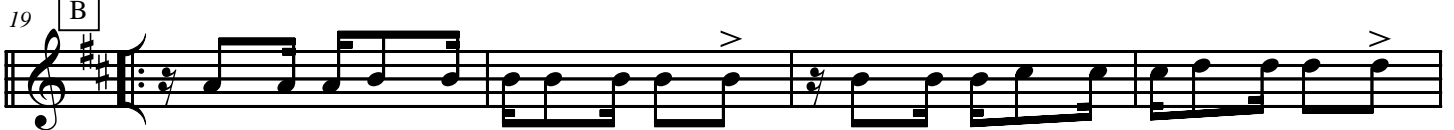
D⁶

D⁶/F[♯]

A⁷/E

A⁷

D



mf gracefully

(C) Copyright of the author in public domain. (C) Copyright do autor em domínio público.

This arrangement and adaptation: (C) Copyright 2007 Global Choro Music (USA) and Global Choro Music Brasil Produções Artísticas Ltda (Brazil)

Este arranjo e adaptação: (C) Copyright 2007 Global Choro Music Corporation (EUA) e Global Choro Music Brasil Produções Artísticas Ltda (Brasil)

All rights reserved. International copyright secured. Todos os direitos reservados.

www.ChoroMusic.com

G6 G6/B D/A D/F# A7/E A7 D D#dim

23

A7/E A7 D6 D6/F# Em/G A7 D D/F#

27 *mf*

G6 G6/B D/A B7 Em A7 D D dim

31

D F#7/C# Bm *Trio* C B C° F#7/C# D° B/D# C#7/G#

35 *f* *D.S. al*

G6 F#7 C#7/F F#7/E G#7/D#

41 *f*

C#m C#m/B D#7/A# G#m A#7/G# D#m/F#

45

E6 B/F# C#7/F F#7/E B/D# F#7 B/D#

50 *f*

D.S. al Fine